



Improving Academic and Professional Education Capacity in Serbia in the Area of Safety & Security (by Means of Strategic Partnership with the EU) - IMPRESS



Co-funded by the
Erasmus+ Programme
of the European Union



Steinbeis advanced risk technologies institute doo Kragujevac R-tech KG

ImprESS Kick-off meeting

BELGRADE, December 20th 2017



Co-funded by the
Erasmus+ Programme
of the European Union

Steinbeis Advanced Risk Technologies Institute doo (R-tech KG)

About us

- Founded on March 2015 in Kragujevac, Serbia as the Franchisee of Steinbeis GmbH & Co. KG für Technologietransfer (StC), Stuttgart, Germany
- It is one of more than 1000 Steinbeis units present in 50+ countries in the world.

Project-oriented company, current projects:

1. PANBioRA

“Personalized And/Or Generalized Integrated Biomaterial Risk Assessment” – (H2020-NMBP-2016-2017-call for nanotechnologies, advanced materials, biotechnology and production - Type of Action RIA)

2. ImprESS

“Improving Academic and Professional Education Capacity in Serbia in the Area of Safety & Security (by Means of Strategic Partnership with the EU)” - Erasmus + programme 586410-EPP-1-2017-1-RS-EPPKA2-CBHE-JP



Co-funded by the
Erasmus+ Programme
of the European Union

Steinbeis Advanced Risk Technologies Institute doo

**The focus of the
expertise and
the
professional
program is:**

- Modelling and simulation for underground pollution system
- Process of safety in refinery and complex industrial systems
- Asset/plant and Health/hazard oriented risk management
- Environmental pollution problem
- Statistical analysis
- Scientific computing
- Cloud computing, grid infrastructure
- Virtual design and engineering
- Knowledge-transfer network between research, politics and industry



Co-funded by the
Erasmus+ Programme
of the European Union

Development of Prvonek dam

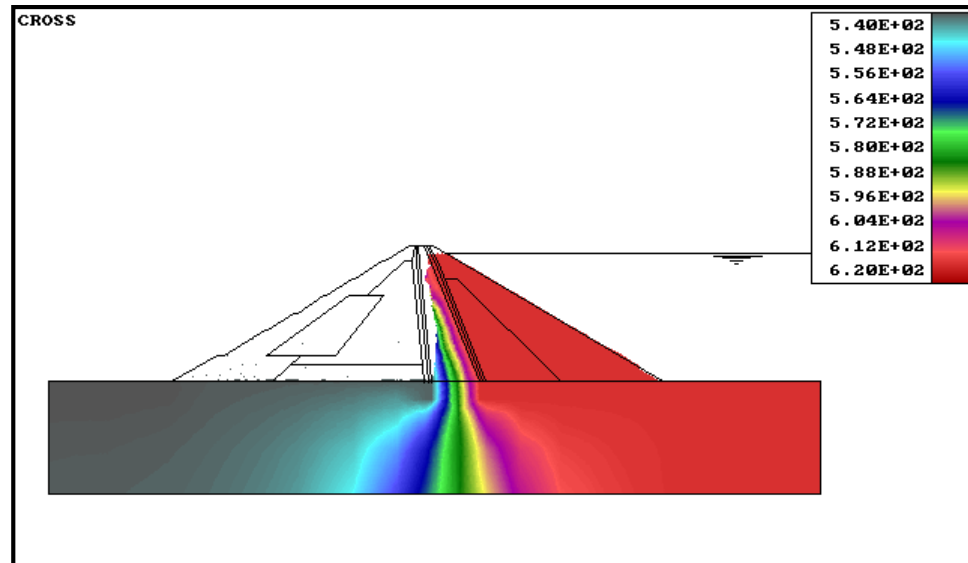
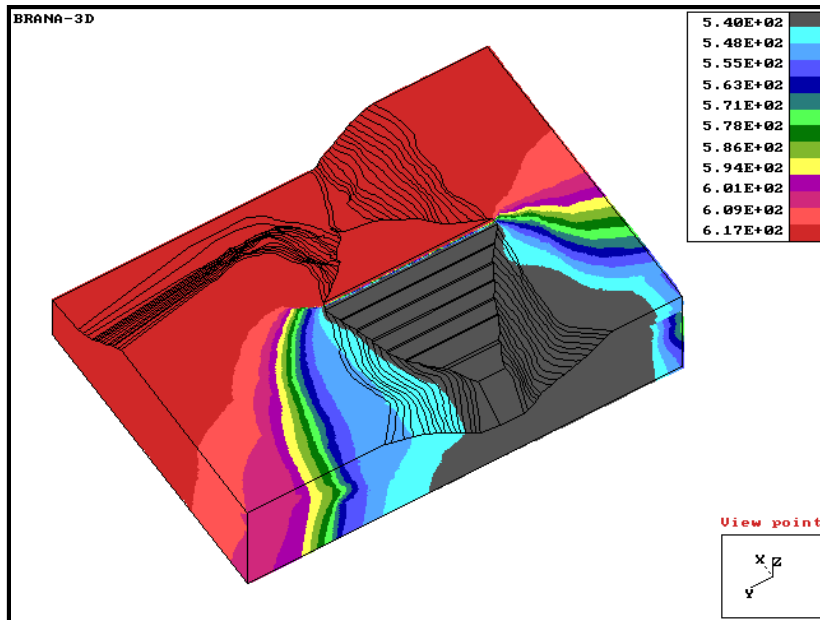




Potential field (Prvonek dam)



Co-funded by the
Erasmus+ Programme
of the European Union



Modeling of rivers

Untitled - Lizza

File Edit View Topology Constraints Modify Calculation Results Tools Help

Model View
View Plane: X = 0.83, Y = -0.51, Z = 0.21

Edit River

ID 1 Title Dunav

Cross Sections Water Levels

Colmated Bed
 Colmated Bed Thickness 1 Permeability 1e-005

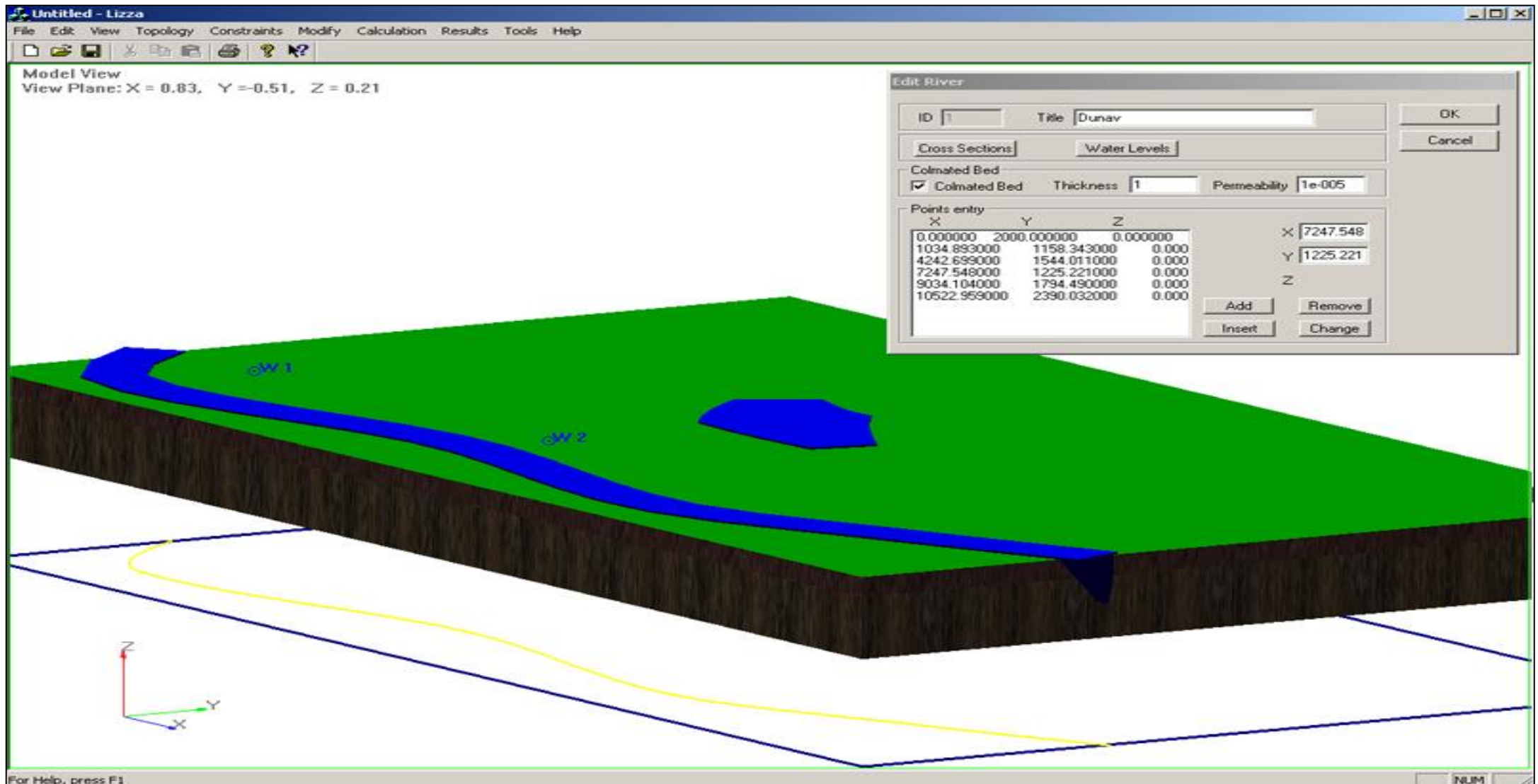
Points entry

X	Y	Z
0.000000	2000.000000	0.000000
1034.893000	1158.343000	0.000
4242.699000	1544.011000	0.000
7247.548000	1225.221000	0.000
9034.104000	1794.490000	0.000
10522.959000	2390.032000	0.000

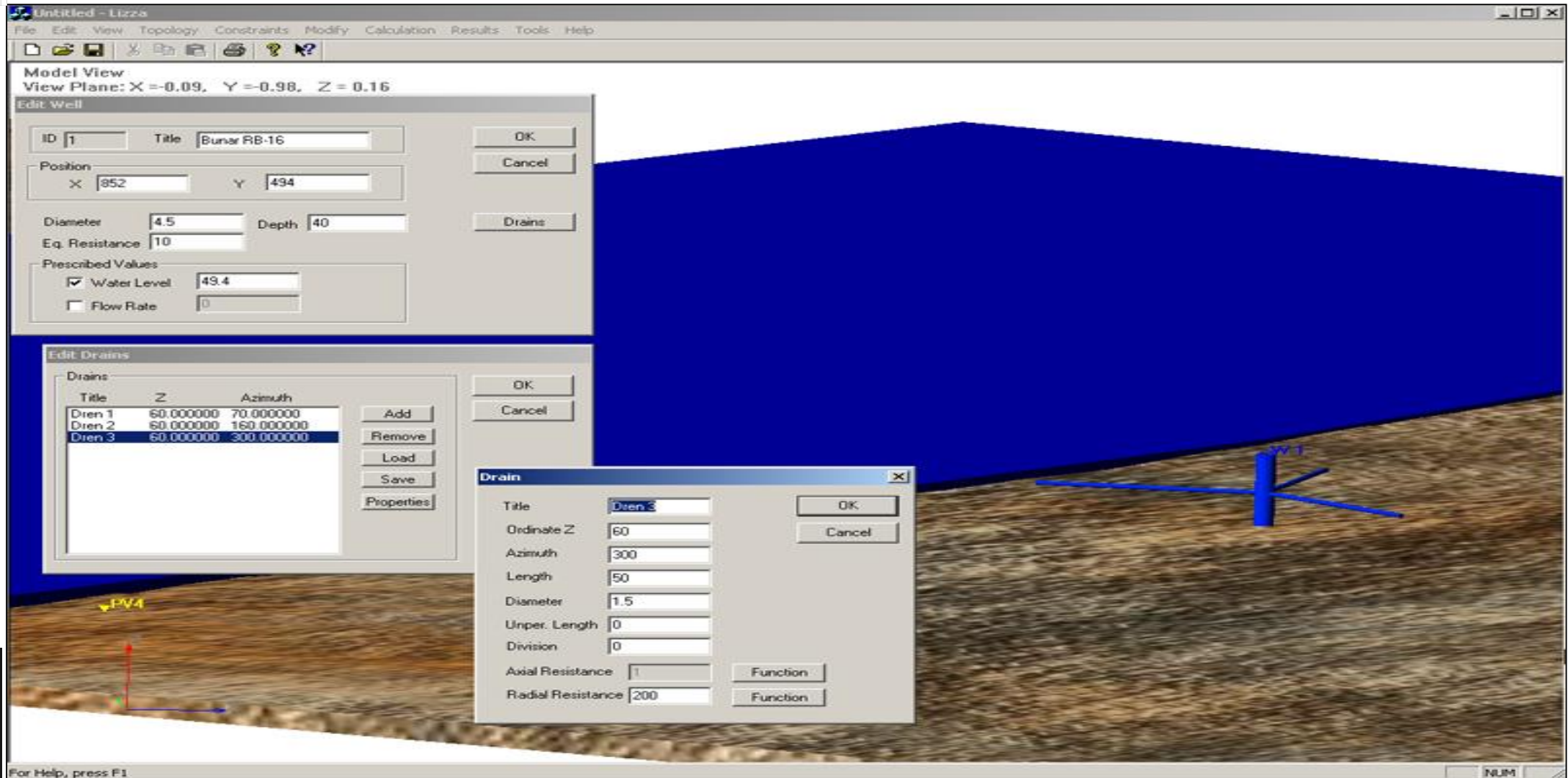
X 7247.548
Y 1225.221
Z

Add Remove
Insert Change

For Help, press F1



Modeling of Ranney wells



Model View
View Plane: X = -0.09, Y = -0.98, Z = 0.16

Edit Well

ID: 1 Title: Bunar RB-16

Position: X: 852 Y: 494

Diameter: 4.5 Depth: 40

Eq. Resistance: 10

Prescribed Values:
 Water Level: 49.4
 Flow Rate: 0

Edit Drains

Title	Z	Azimuth
Dren 1	60.000000	70.000000
Dren 2	60.000000	160.000000
Dren 3	60.000000	300.000000

Drain

Title: Dren 3

Ordinate Z: 60

Azimuth: 300

Length: 50

Diameter: 1.5

Unper. Length: 0

Division: 0

Axial Resistance: 1

Radial Resistance: 200





Co-funded by the
Erasmus+ Programme
of the European Union

Role in the ImprESS project

WP4 R-Tech KG will develop e-learning courses and establish tools for distance learning

**WP7 Leader -DISSEMINATION AND EXPLOITATION ACTIVITIES
Extending the Model and its applicability Europe-wide**

Active participation in management and all relevant project activities.

WP 7- Dissemination and exploitation activities



Dissemination plan creation



Development, maintenance and promotion of the ImprESS Website



ImprESS social network communication



Use & Link to already developed EU tools



Opening and maintenance of e-library public access area



Perform media, enrolment and promo campaigns



Organize ImprESS symposia and workshops



Exploitation plan





Co-funded by the
Erasmus+ Programme
of the European Union

Project WEB site

www.impress.kpa.edu.rs

**THANK YOU
FOR YOUR
ATTENTION**

